



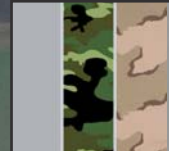
Beyond-Line-Of-Sight Satellite System
Worldwide data transmission



Mission GPS Antenna
Source for geo-referencing & moving map



Autonomous Power Supply System for Mission Equipment
Separate 28V/60A alternator supporting mission equipment exclusively
+ Extra battery
+ Extra external power socket
+ Mission control box 4x 28V, 2x 12V



Flexible Mission Painting Scheme
Mission environment camouflage painting non reflecting



Surround View Windows (optional)
Optimizing the pilot's field of view in special service missions



Mission Management System
Enhances mission crew coordination



Line-Of-Sight Downlink System
Local data transmission



Systems Compartment
Plenty of space for storage and support units (airborne server room)



Sensor Operator Station & Camera Lift
Ergonomic and spacious working environment



Large Sensor Bay
Versatile internal sensor compartment with a retractable sensor support system

TYPICAL MISSION CONFIGURATION

- 385 kg** Max Payload
- **170 kg** Crew (Pilot + Operator each 85 kg)
- **21 kg** Sensor Equipment (L3-MX10 or FLIR UltraForce 350)
- **16 kg** Sensor Lift
- **18 kg** Uplink System (SCOTTY Satcom Rack)
- **6 kg** Downlink System (BMS)
- **10 kg** Operator Workstation + Moving Map (EUROAVIONICS)
- **5 kg** Tactical Communication HF-Radio
- **139 kg** Fuel for 5 h+